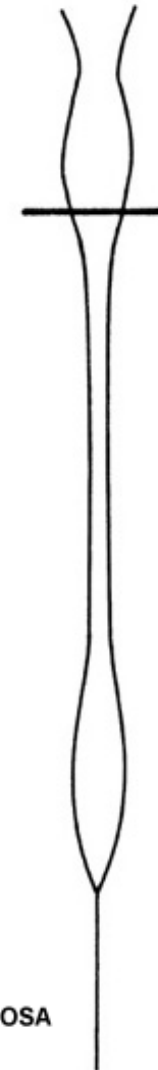
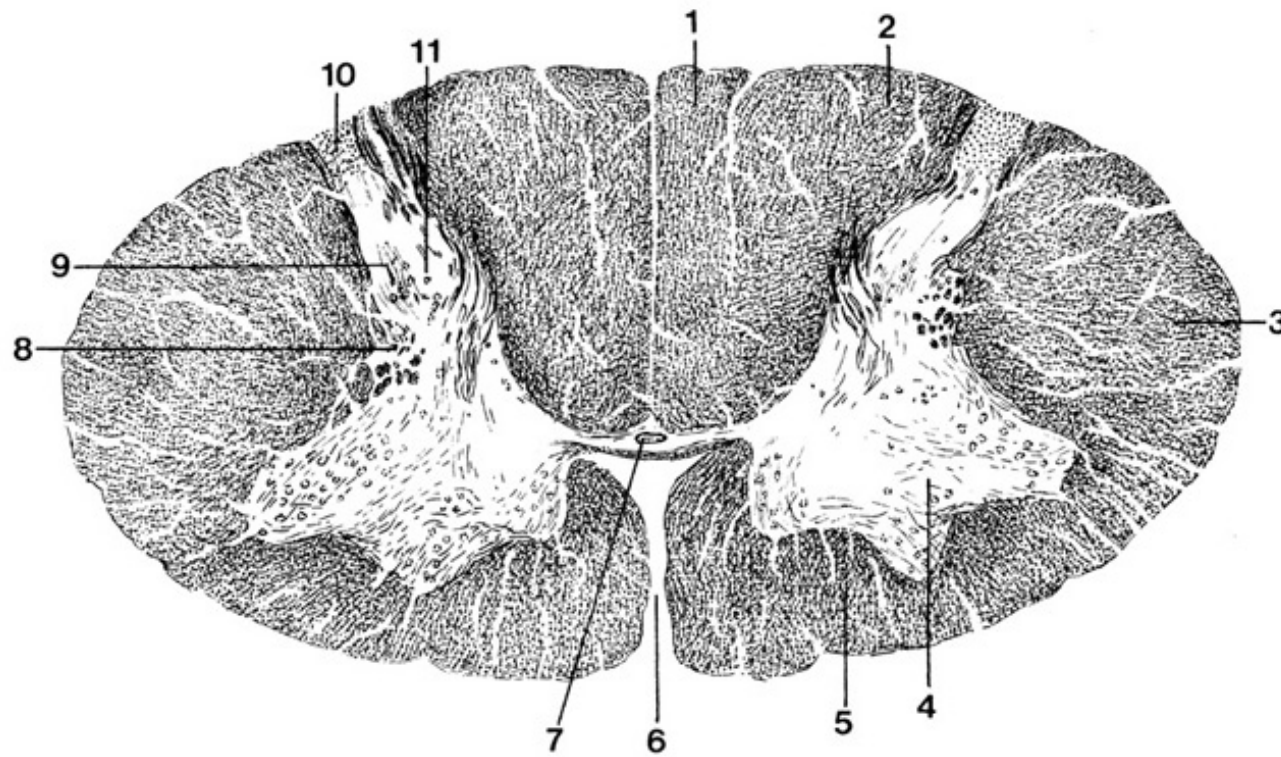
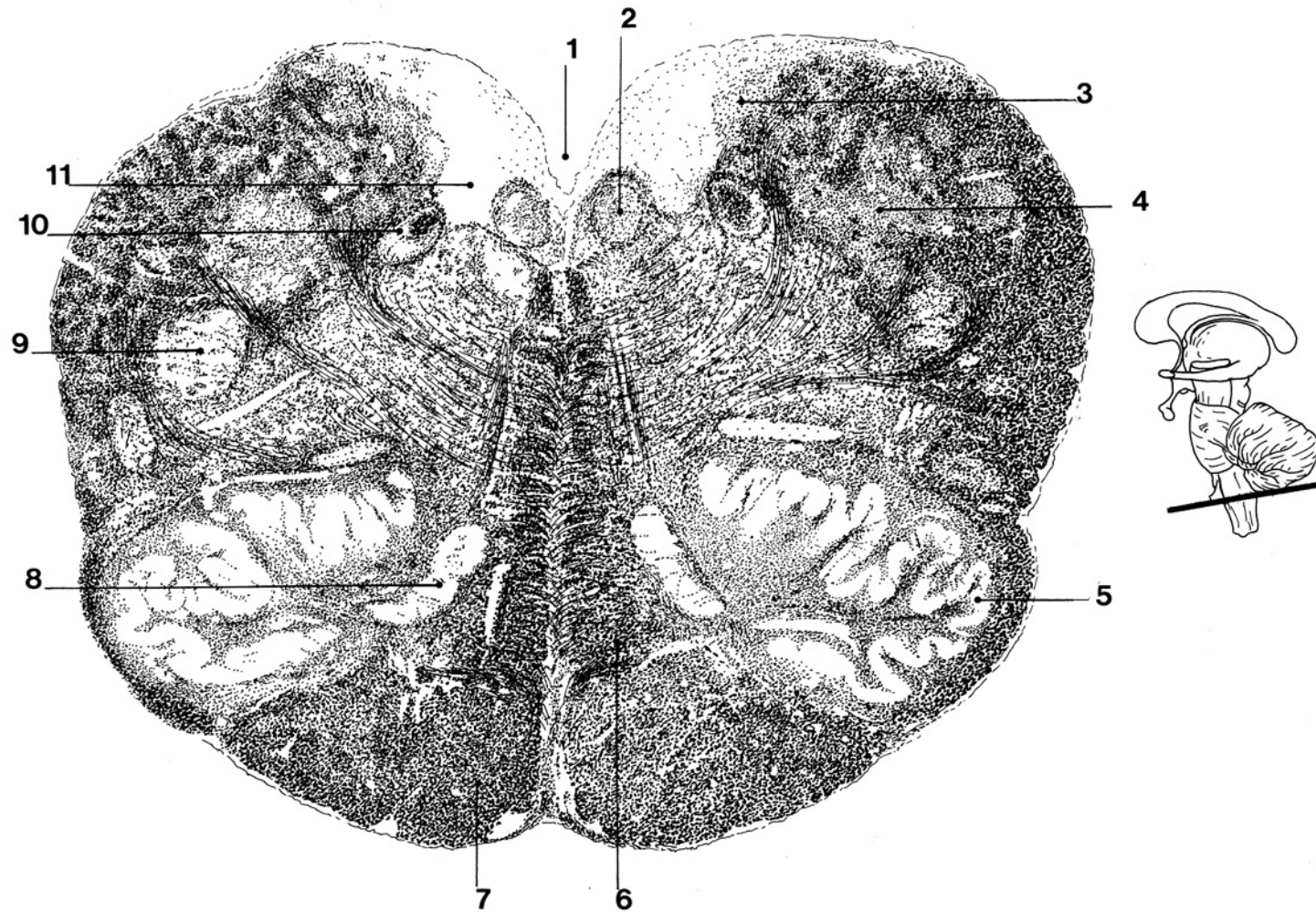


Weigert preparati - ispitno gradivo

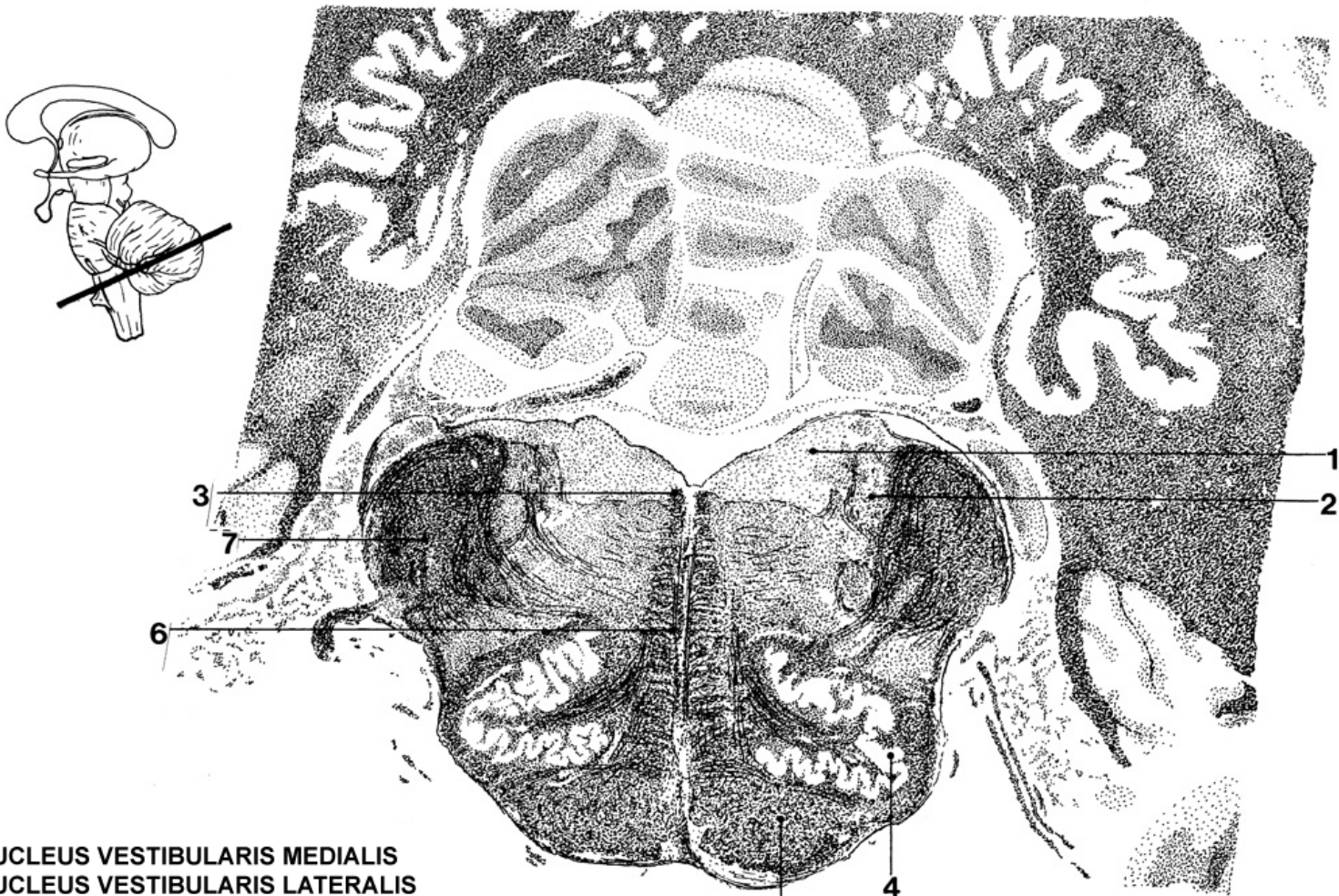
Zagreb, 2004.



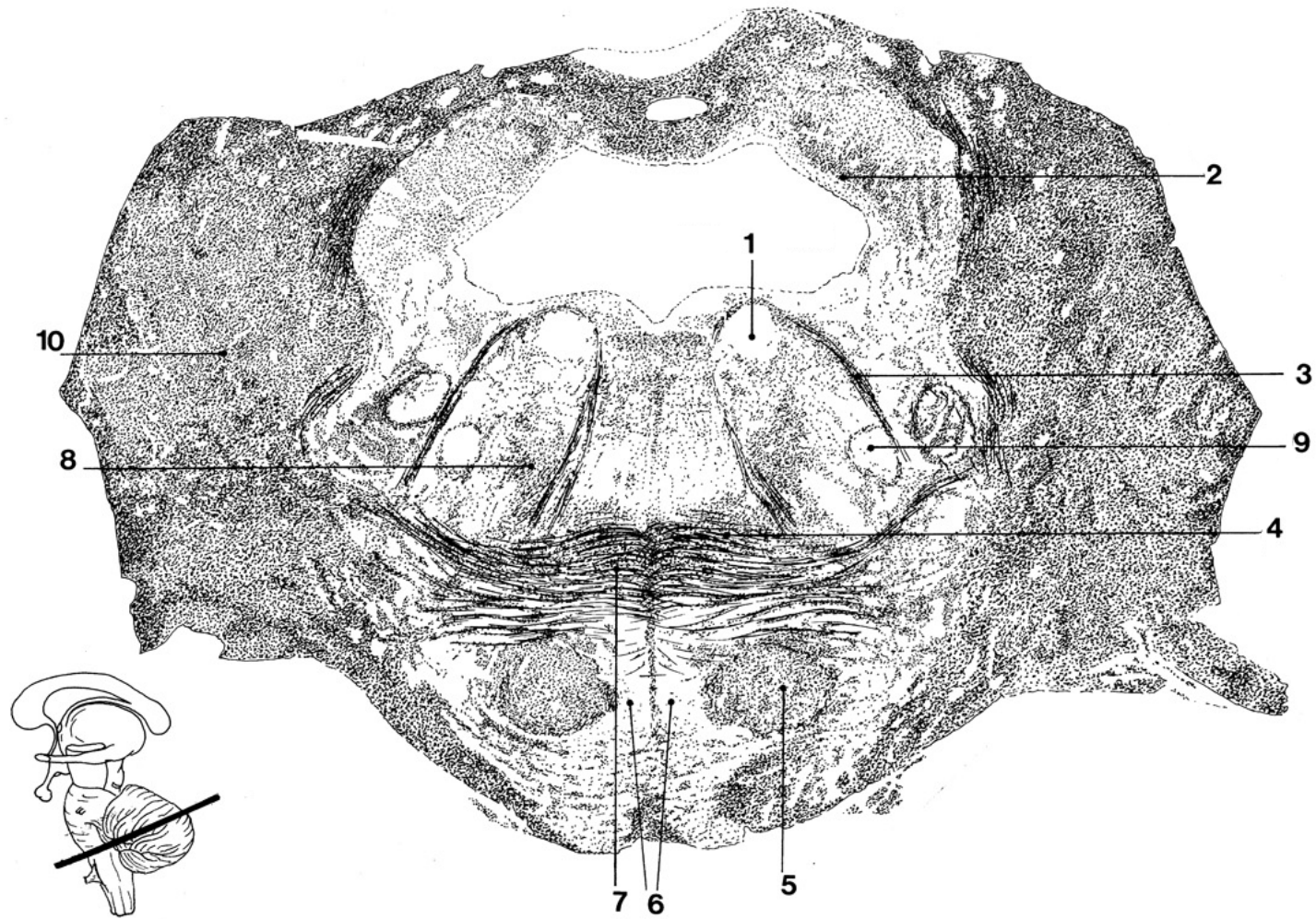
1.FASCICULUS GRACILIS, 2.FASCICULUS CUNEATUS, 3. FUNICULUS LATERALIS, 4. CORNU VENTRALE, 5. FUNICULUS VENTRALIS, 6.FISSURA MEDIANA VENTRALIS, 7. CANALIS CENTRALIS, 8. COLUMNA LATERALIS, 9 SUBSTANTIA GELATINOSA ROLANDI, 10. ZONA TERMINALIS LISSAUERI, 11. CORNU DORSALE.



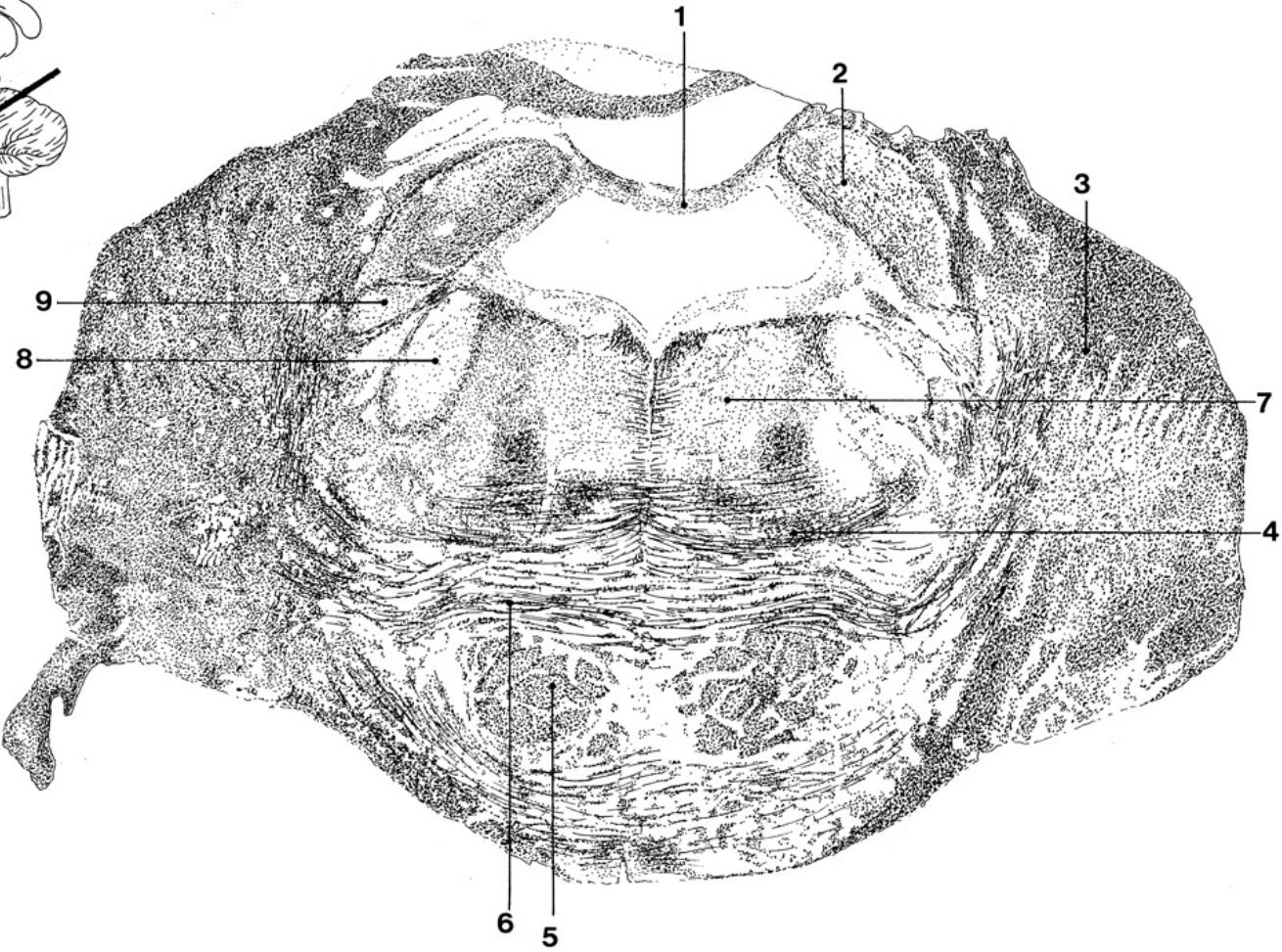
1. VENTRICULUS QUARTUS, 2. NUCLEUS NERVI HYPOGLOSSI, 3. NUCLEUS GRACILIS, 4. NUCLEUS CUNEATUS, 5. NUCLEUS OLIVARIS INFERIOR, 6. LEMNISCUS MEDIALIS, 7. PYRAMIS MEDULLAE OBLONGATAE, 8. NUCLEUS OLIVARIS ACCESSORIUS MEDIALIS, 9. NUCLEUS SPINALIS NERVI TRIGEMINI, 10. NUCLEUS SOLITARIUS, 11. NUCLEUS DORSALIS NERVI VAGI



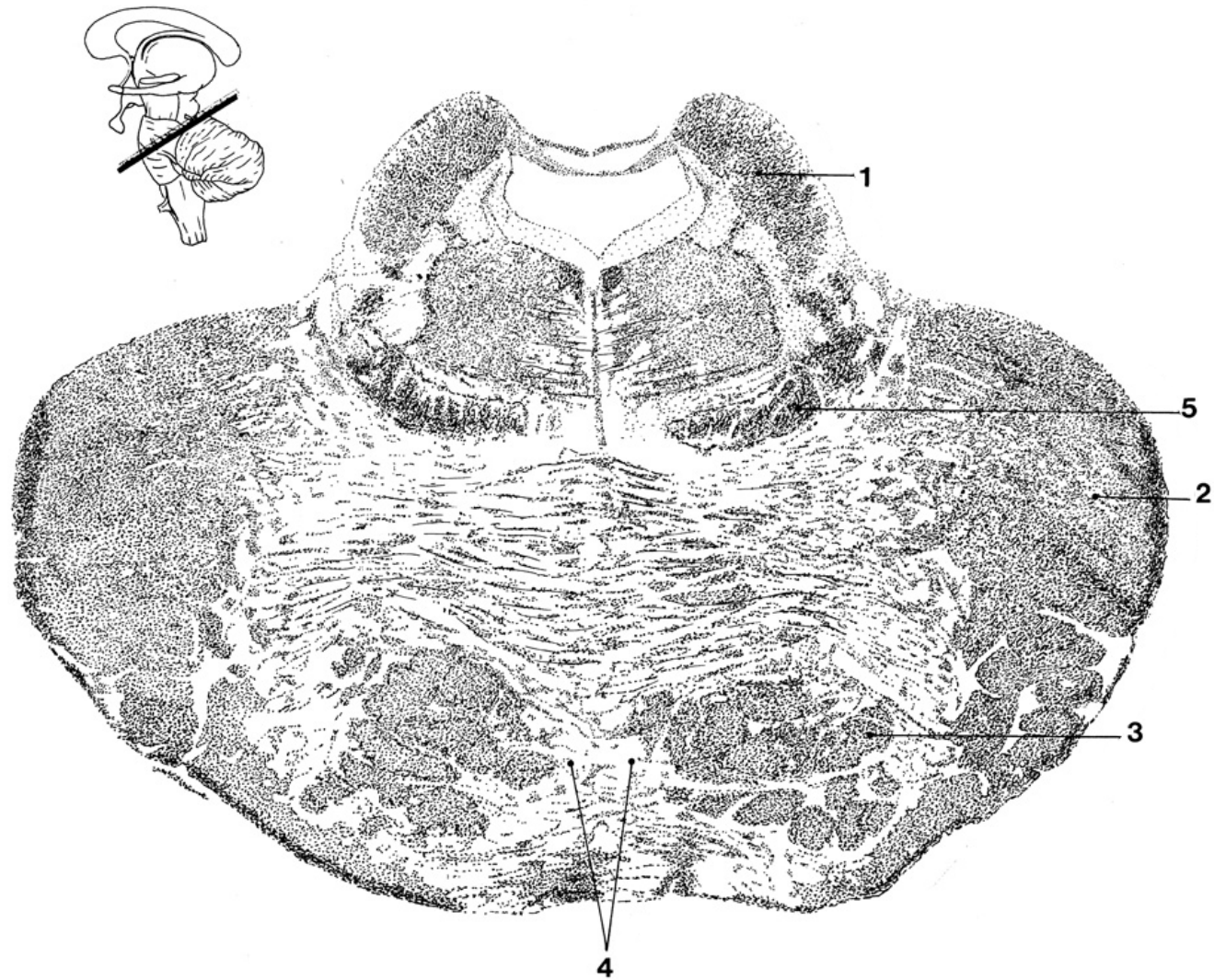
- 1. NUCLEUS VESTIBULARIS MEDIALIS
- 2. NUCLEUS VESTIBULARIS LATERALIS
- 3. FASCICULUS LONGITUDINALIS MEDIALIS (FLM)
- 4. NUCLEUS OLIVARIS INFERIOR
- 5. TRACTUS CORTICOSPINALIS
- 6. LEMNISCUS MEDIALIS
- 7. PEDUNCULUS CEREBELLARIS INFERIOR



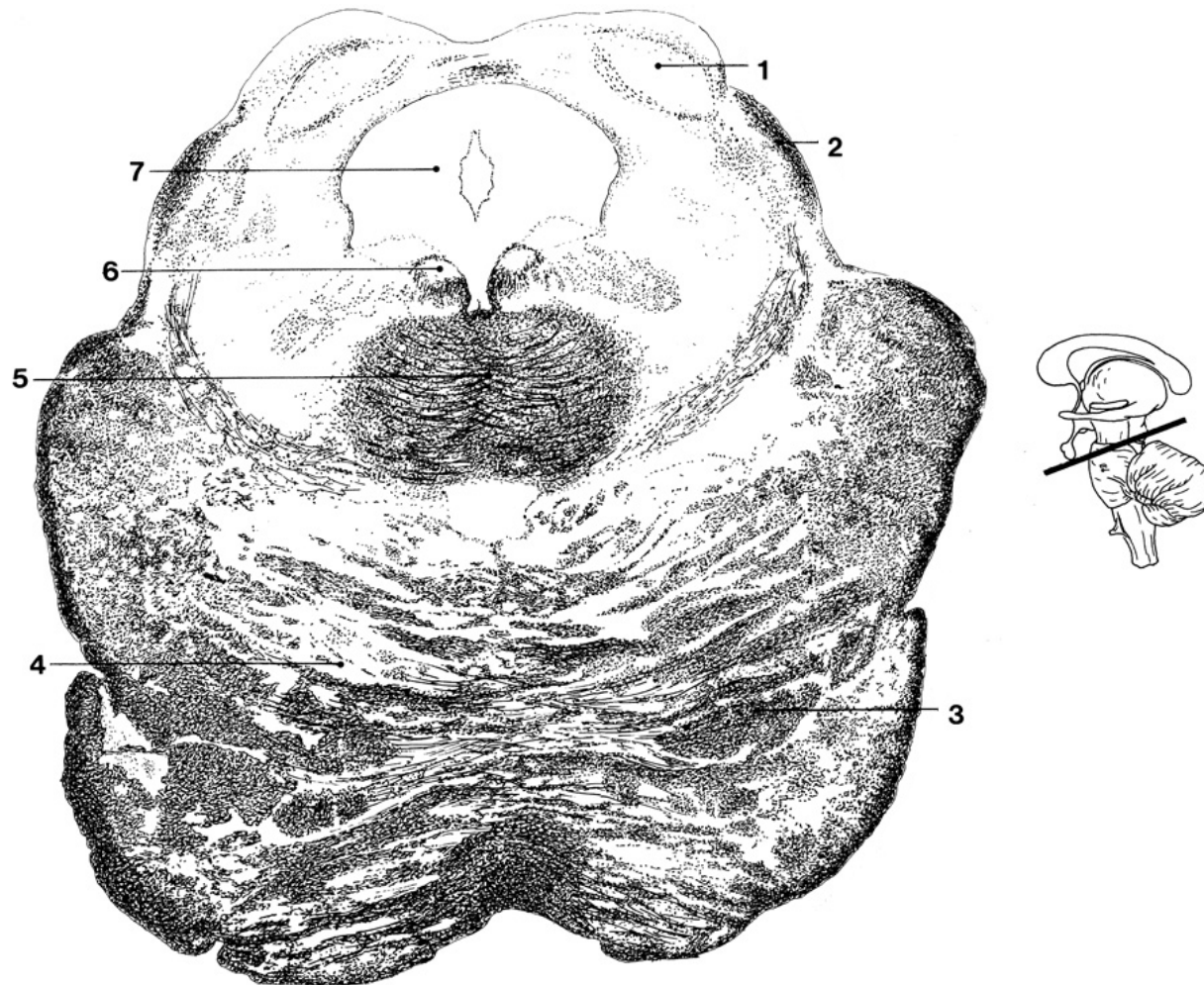
1. NUCLEUS N. ABDUCENTIS, 2. PEDUNCULUS CEREBELLARIS SUPERIOR, 3. FILA RADICULARIA NERVI FACIALIS, 4. LEMNISCUS MEDIALIS, 5. TRACTUS CORTICOSPINALIS, 6. NUCLEI PONTIS, 7. CORPUS TRAPEZOIDEUM, 8. TRACTUS TEGMENTALIS CENTRALIS, 9. NUCLEUS NERVI FACIALIS, 10. PEDUNCULUS CEREBELLARIS MEDIUS



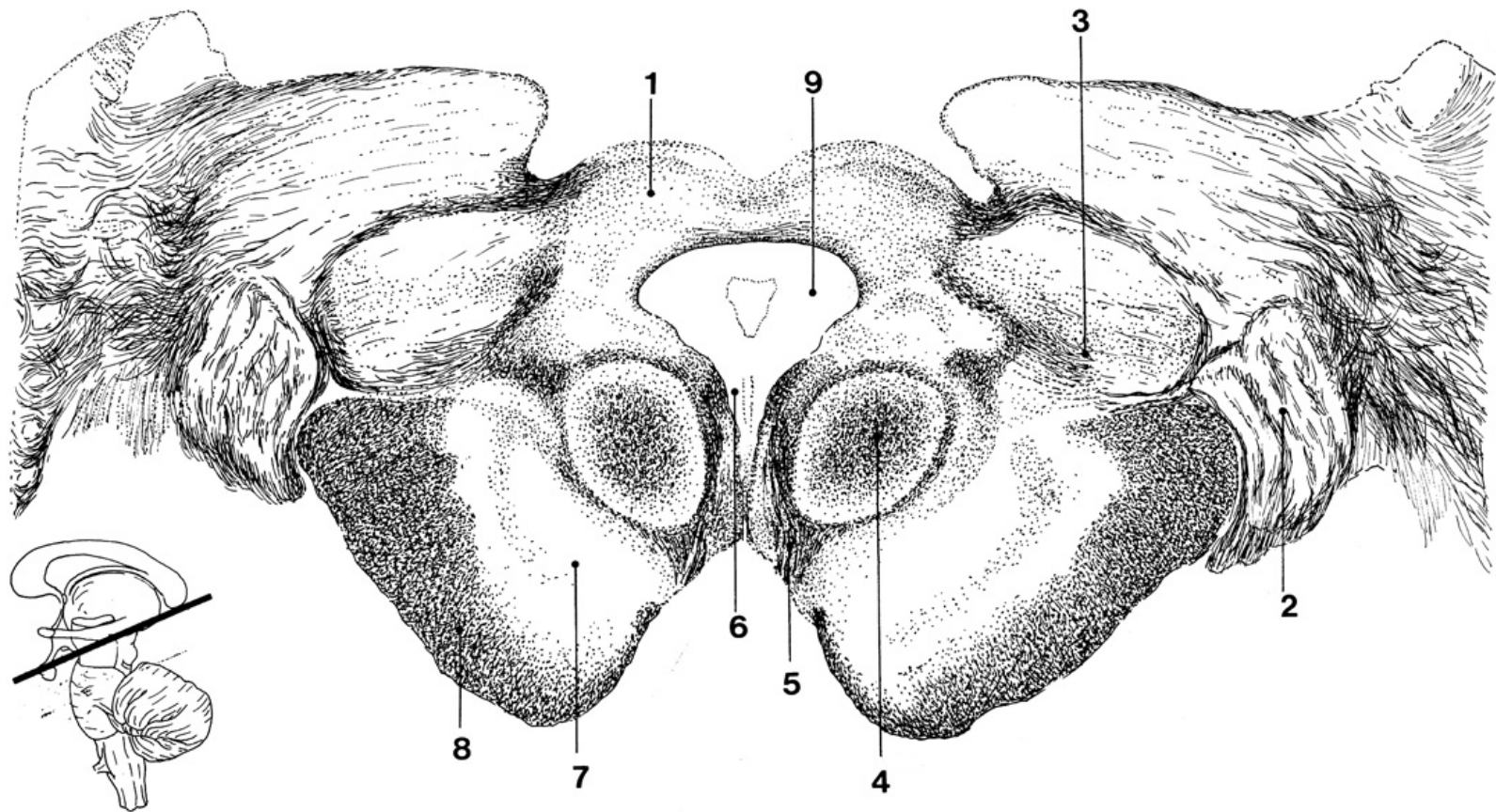
1. VELUM MEDULLARE SUPERIUS, 2. PEDUNCULUS CEREBELLARIS SUPERIOR, 3. PEDUNCULUS CEREBELLARIS MEDIUS, 4. CORPUS TRAPEZOIDEUM, 5. TRACTUS CORTICOSPINALIS, 6. FIBRAE PONTIS PROFUNDAE, 7. FORMATIO RETICULARIS, 8. NUCLEUS MOTORIUS NERVI TRIGEMINI, 9. NUCLEUS PONTINUS NERVI TRIGEMINI



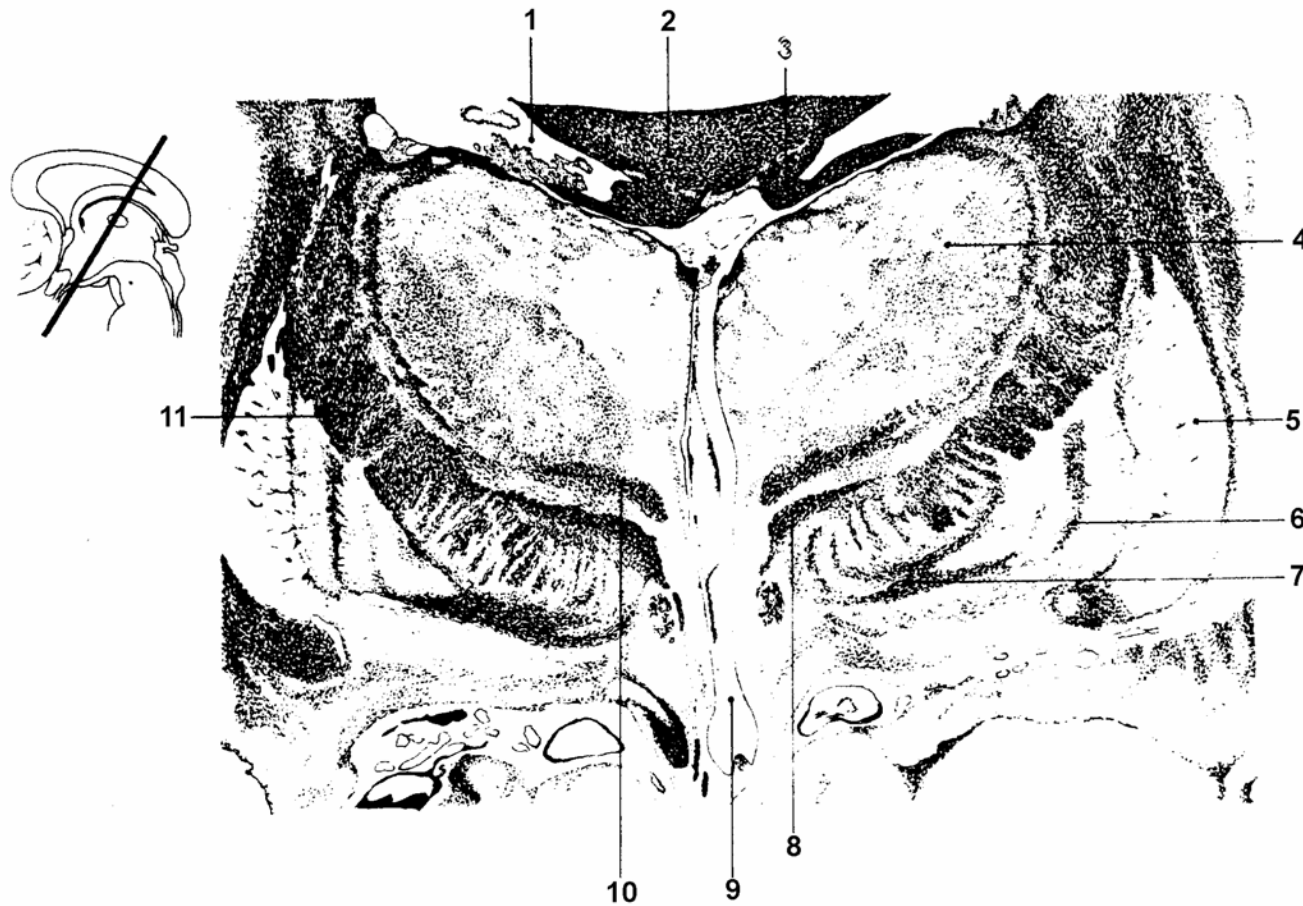
1. PEDUNCULUS CEREBELLARIS SUPERIOR, 2. PEDUNCULUS CEREBELLARIS MEDIUS, 3. TRACTUS CORTICOSPINALIS, 4. NUCLEI PONTIS, 5. LEMNISCUS MEDIALIS



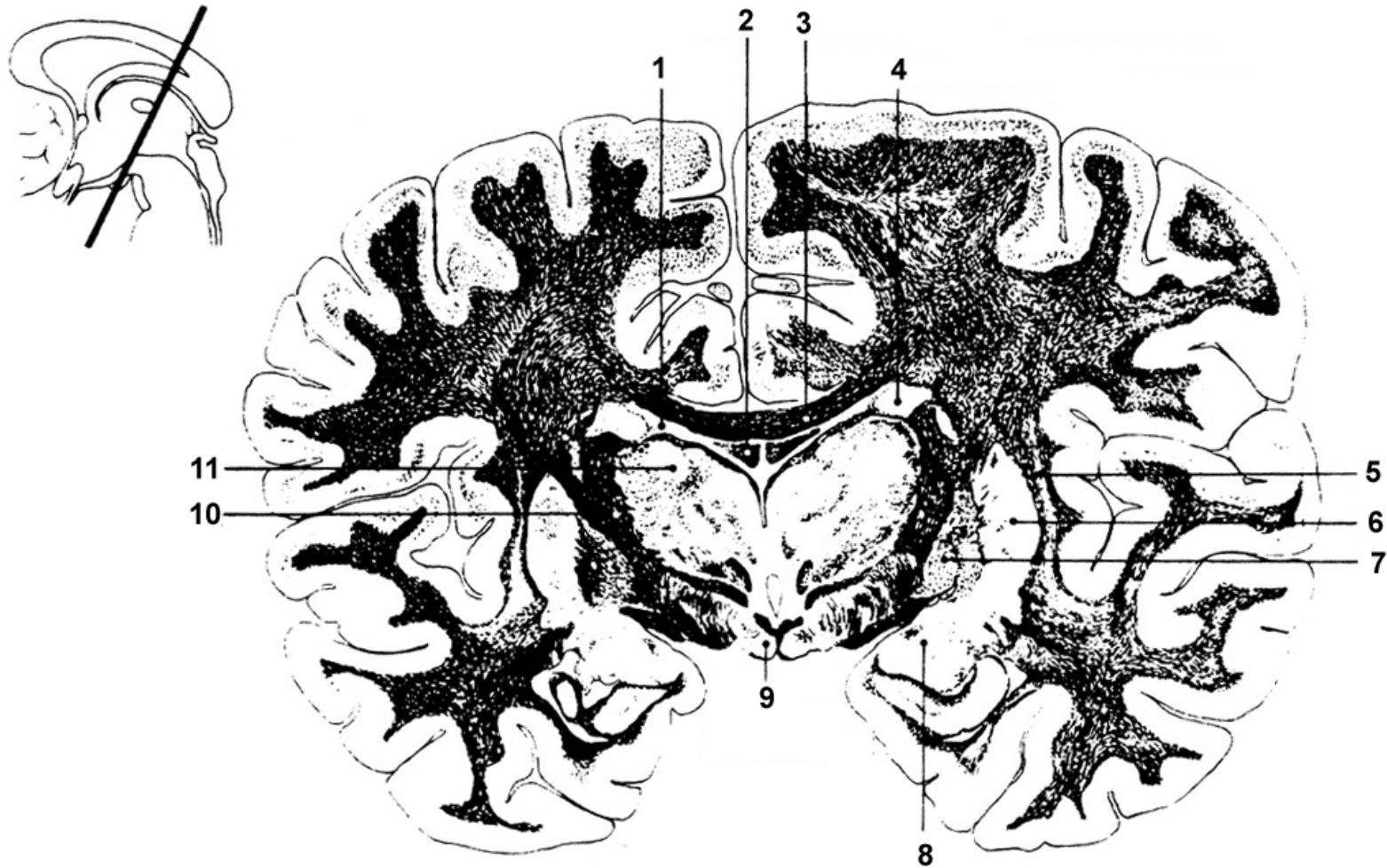
1. COLLICULUS INFERIOR, 2. LEMNISCUS LATERALIS, 3. TRACTUS CORTICOSPINALIS, 4. NUCLEI PONTIS, 5. DECUSSATIO PEDUNCULORUM CEREBELLARIUM SUPERIORUM, 6. NUCLEUS NERVI TROCHLEARIS, 7. SUBSTANTIA GRISEA CENTRALIS (PAG)



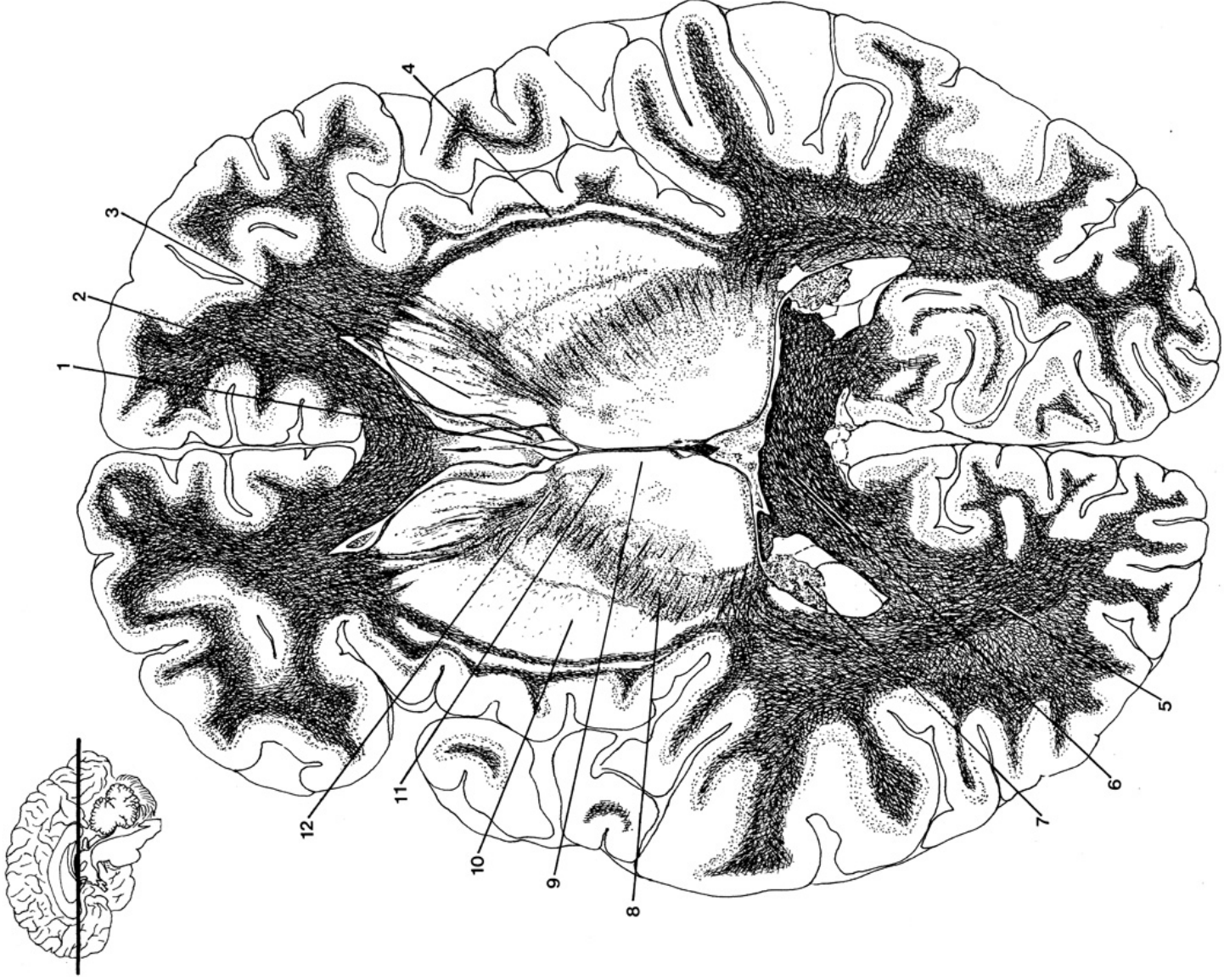
1. COLLICULUS SUPERIOR, 2. CORPUS GENICULATUM LATERALE, 3. CORPUS GENICULATUM MEDIALE, 4. NUCLEUS RUBER, 5. RADIX NERVI OCULOMOTORII, 6. NUCLEUS NERVI OCULOMOTORII, 7. NUCLEUS NIGER, 8. CRUS CEREBRI, 9. SUBSTANTIA GRISEA CENTRALIS (PAG)



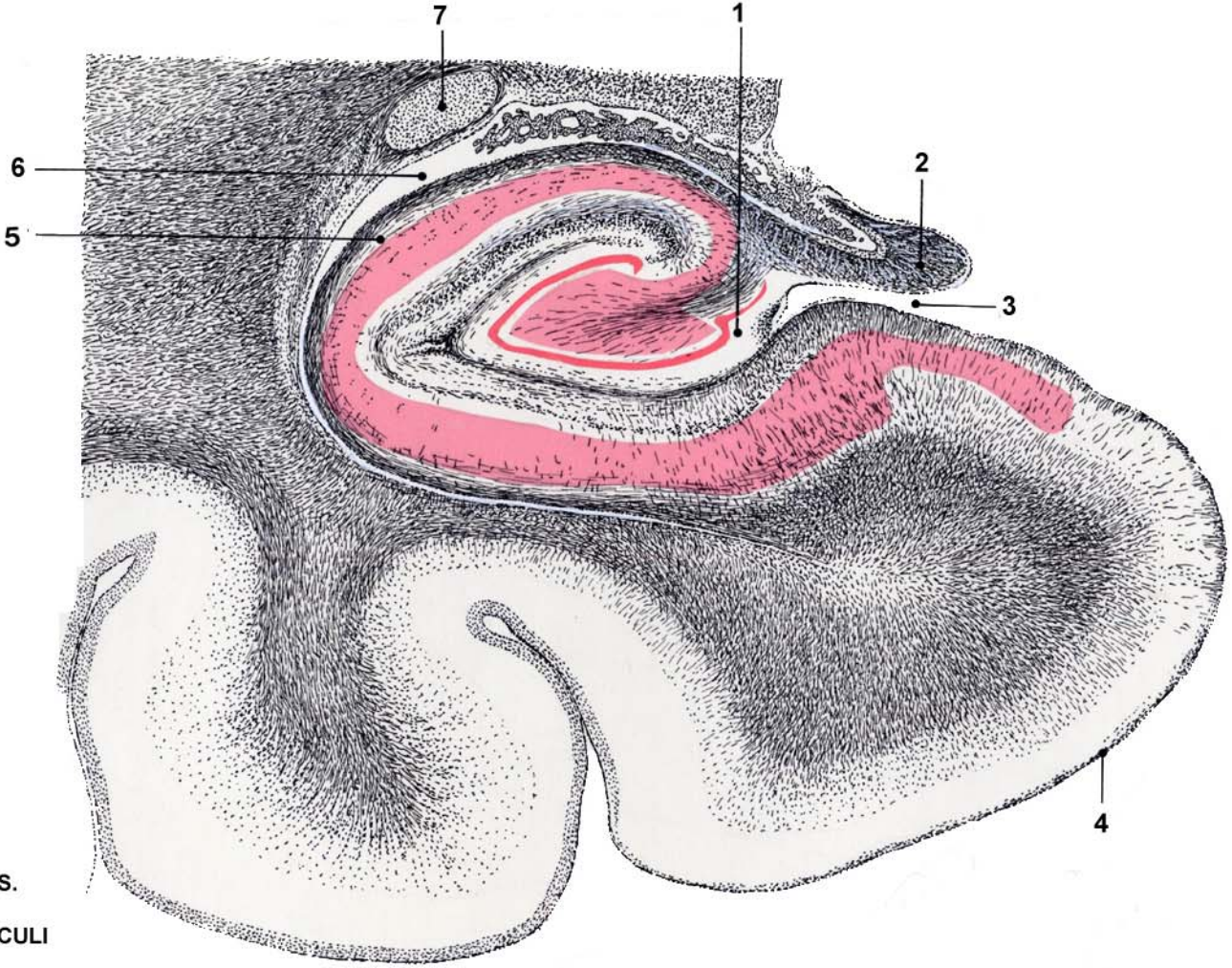
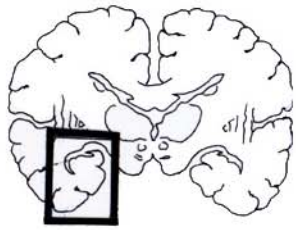
1. PLEXUS CHORIOIDEUS VENTRICULI LATERALIS, 2. CORPUS CALLOSUM, 3. FORNIX, 4. THALAMUS, 5. PUTAMEN, 6. GLOBUS PALLIDUS, 7. ANSA LENTICULARIS, 8. FASCICULUS LENTICULARIS, 9. VENTRICULUS TERTIUS, 10. FASCICULUS THALAMICUS, 11. CAPSULA INTERNA



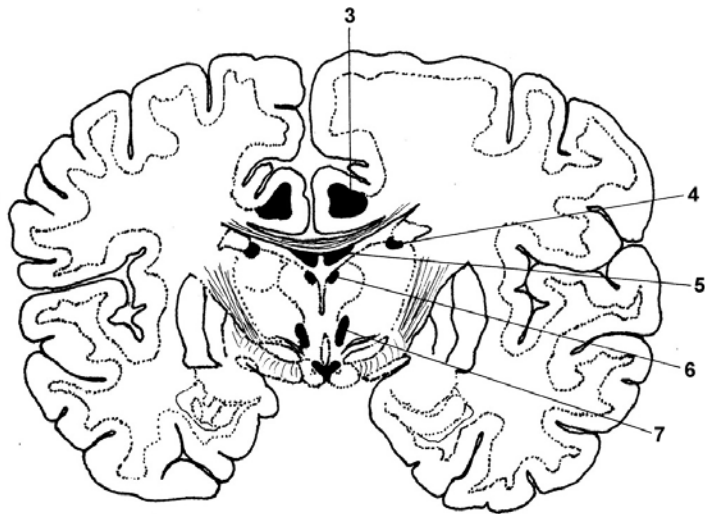
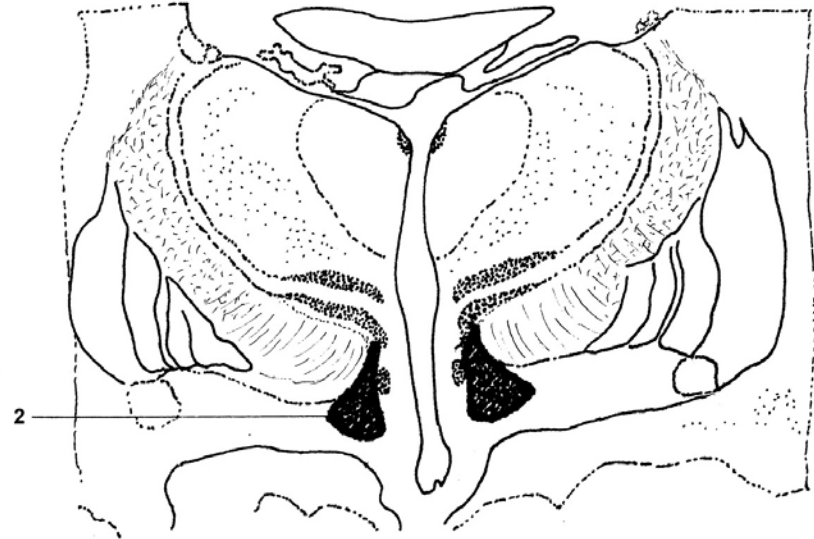
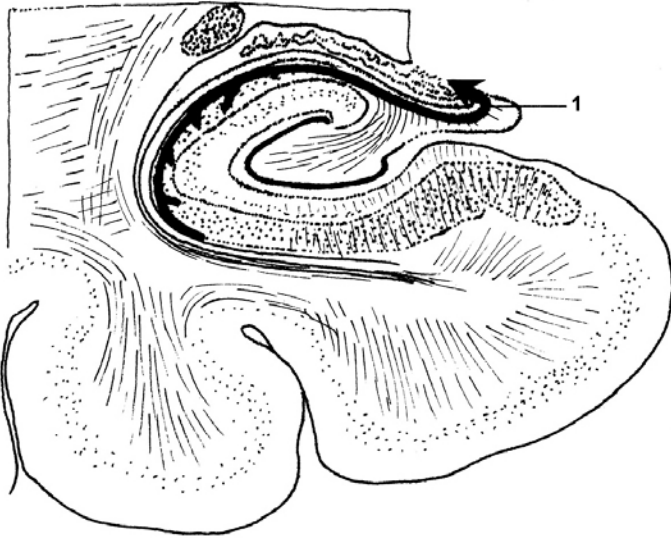
1. VENTRICULUS LATERALIS, 2. FORNIX, 3. CORPUS CALLOSUM, 4. NUCLEUS CAUDATUS, 5. CLAUSTRUM, 6. PUTAMEN, 7. GLOBUS PALLIDUS, 8. CORPUS AMYGDALOIDEUM, 9. CORPUS MAMILLARE, 10. CAPSULA INTERNA, 11. THALAMUS



1. VENTRICULUS TERTIUS, 2. COLUMNNA FORNICIS, 3. CAPUT NUCLEI CAUDATI,
4. CLAUSTRUM, 5. RADIATIO OPTICA, 6. SPLENIUM CORPORIS CALLOSI,
7. PLEXUS CHOROIDEUS VENTRICULI LATERALIS, 8. CRUS POSTERIOR CAPSULAE
INTERNAE, 9. THALAMUS, 10. PUTAMEN, 11. FASCICULUS MAMILLOTHALAMICUS,
12. GENU CAPSULAE INTERNAE



- 1. GYRUS DENTATUS
- 2. FIMBRIA HIPPOCAMPI
- 3. SULCUS HIPPOCAMPI
- 4. GYRUS PARAHIPPOCAMPALIS.
- 5. HIPPOCAMPUS
- 6. CORNU TEMPORALE VENTRICULI LATERALIS



- 1.FIMBRIA HIPPOCAMPI
- 2.MEDIAL FORBRAIN BUNDLE - MFB
- 3.CINGULUM
- 4.STRIA TERMINALIS
- 5.FORNIX
- 6.STRIA MEDULLARIS
- 7.FASCICULUS MAMILLOTHALAMICUS



